



Raleigh Rescue Mission

Serving Wake County since 1961



raleighrescue.org

Who We Serve

- The 80% of individuals experiencing homelessness who are willing & able to work.
- Single men, single women, single parents with children.
- Life-altering event + no support structure = situationally homeless.
- Individuals in recovery from substance use disorder (not all clients).

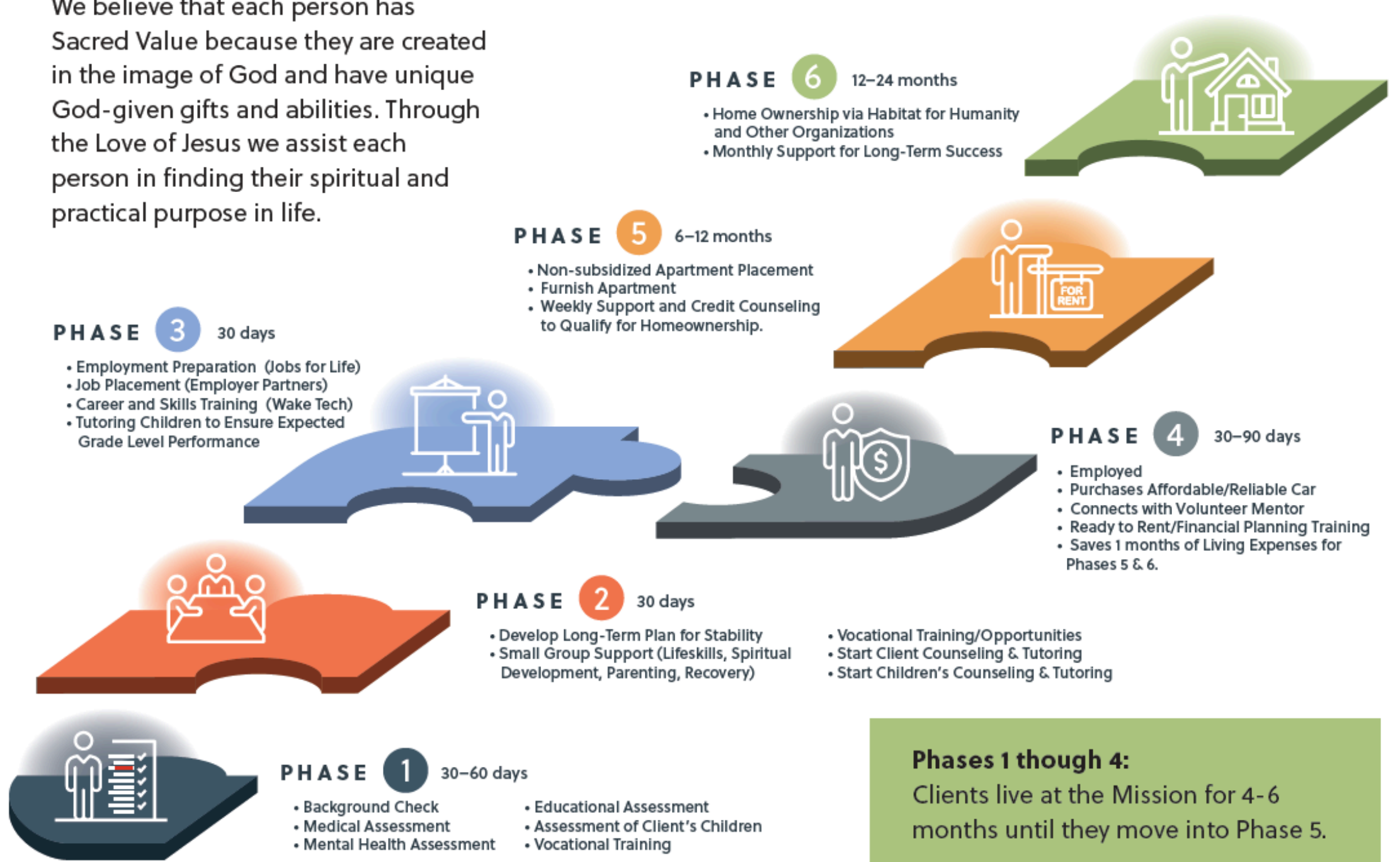
Why We Serve

“Whatever you did for the least of these brothers of mine, you did for me.” – Matt. 25:40

- Each person has God-given gifts & abilities.
- Children without shelter are vulnerable & require nurturing in a safe place.
- Our clients work hard.
- Those who need assistance live among us.

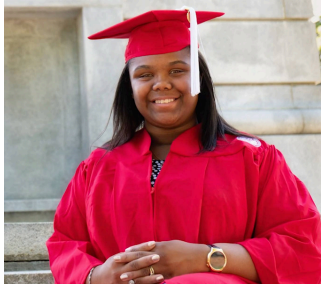
How We Serve: New Life Plan

We believe that each person has Sacred Value because they are created in the image of God and have unique God-given gifts and abilities. Through the Love of Jesus we assist each person in finding their spiritual and practical purpose in life.



Phases 1 through 4:
Clients live at the Mission for 4-6 months until they move into Phase 5.

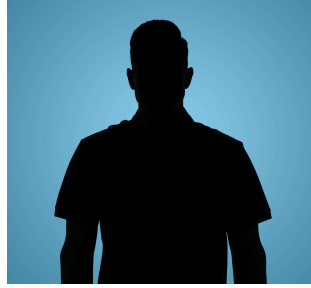
Our Clients



Entered the Mission with Mom
Now: NC State Engineering Graduate



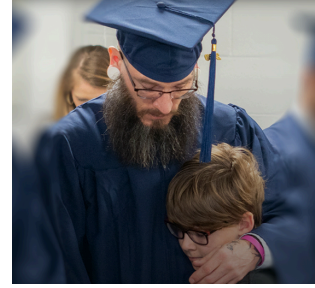
LeeAndre's Story:
-Entered the Mission with mom
-Now: Duke TIP Gifted Kid



A Trinity member's story: homeless, divorced, entered RRM at age 40. Now managing a business.



Abused and Homeless. Now EKG Tech.



Father & Son Story:
From crime and substance abuse to fatherhood and Healing Transitions staff.



A second chance to become a good dad and good citizen.



From abuse and homelessness to earning a Wake Tech Hospitality certificate.

Our Community Impact

FY 2023
9/22 - 8/23

Inquiries
1625

Referred
1250

Adults Admitted
237

Children
114

Aftercare (Offsite)
290

- 100% children enrolled in NLP received educational support.
- 76% Phase 3 (JFL) graduates found stable, living-wage jobs.
- 87% of Phase 3 graduates obtained stable housing (Post Phase 4).
- 97% of clients remained drug & alcohol free while in NLP.

Our Funding

- A local nonprofit **funded only by private donations.**
- 72% operating expenses are from **individual households.**
- Corporate & private grants, churches.

Our Challenge

- Current facility serves only 15% of those we could.

Our Plan

The Garden

- Residences, dining, classrooms
- 300-350 women experiencing homelessness, with or without children
- Back-to-Work New Life Plan: changing lives 1 at a time
- Onsite Children's Development Center: nurturing children experiencing homelessness
- Funded by private donations

